

# DOMINIC McKENZIE ARCHITECTS

Dominic McKenzie Architects  
81 Essex Road  
London N1 2SF  
office@dominicmckenzie.co.uk  
0203 327 4780

## PRESS RELEASE

### DOMINIC MCKENZIE ARCHITECTS –

### ISLINGTON TREASURE HUNT AND EXHIBITION

19<sup>th</sup> – 26<sup>th</sup> September 2021

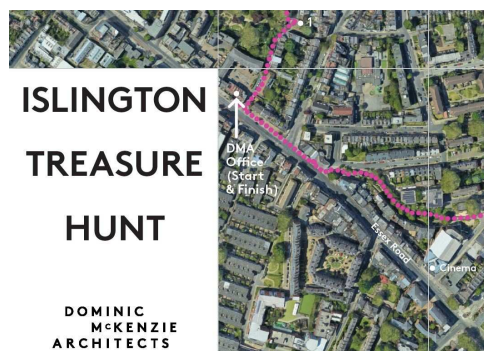
As part of both the London Design Festival 2021 celebrations and more specifically the Islington Design District, Dominic McKenzie Architects have created an Islington (Architectural) Treasure Hunt, which will be available from the ground floor gallery space at their offices during the festival. During the same period, within the gallery, an exhibition of past and present work by the practice will be on display.

#### TREASURE HUNT

Intended as a way of exploring Islington from an architectural point of view, Dominic McKenzie Architects' map will guide participants around carefully selected Islington locations, pointing out great buildings and places and looking for answers to clues as they go along.

The route has been selected to give an architect's point of view of the local area, to reveal the richness of Islington's built environment in an enjoyable walking tour. Even people who have lived in Islington all their life may make new 'discoveries' – a key theme of the London Design Festival 2021.

Treasure Maps can be collected from Dominic McKenzie Architects offices on Essex Road. The route is approximately 2 miles long and is full of architectural gems. At the end of the journey the explorers can return to the DMA offices to claim their treasure.



Treasure map excerpt

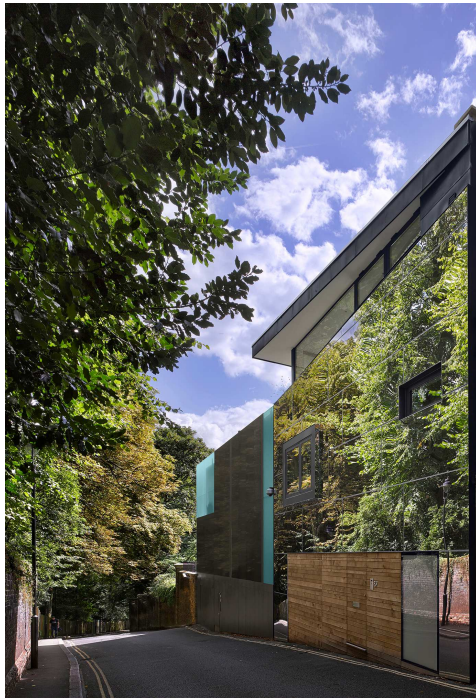
## EXHIBITION

At the same time Dominic McKenzie Architects will be holding an exhibition of past and future work in the ground floor gallery at their office address. This will include award-winning projects such as Tower House and Eidolon House, as well as more recent well publicised projects Hampstead House and Music/Industry. Images of current / new projects, either on site, or visualisations prior to going on site will also be on display as part of the exhibition.

## PRACTICE PROFILE

Dominic McKenzie Architects (DMA) is an award-winning architecture practice based in Islington specialising in residential architecture. DMA's work is contemporary, but often located in an historic context, Conservation Area, or listed building.

DMA was recently selected for Wallpaper\* magazine's Architect's Directory – 'a selection of 'the world's best young architectural talent' and was included in the Architecture Foundation's 'New Architects 3' book showcasing 'the best new practices in the UK since 2005'. In 2019 DMA received the NLA 'Don't Move Improve' award for 'Best Historic Intervention' for their Islington project Tower House.



Eidolon House, Highgate



Tower House, Islington





Hampstead House



Music/Industry offices