

Headline

Scent Print: Wearable Solid Scents for the City

Subheadline

Exhibition and live making near the E1 Design District — The Modern Box, 57 Old Broad Street, EC2M 1RX; 13–21 Sept, 10:00–19:00 (last entry 18:40); 80 numbered pieces; free entry.

Fast facts (for editors)

- **Venue:** The Modern Box, **57 Old Broad Street**, London, **EC2M 1RX**
- **Dates/Hours:** **13–21 Sept 2025** | Open **10:00–19:00** | **Last entry 18:40**
- **Format:** Launch exhibition + **daily drop-in workshop** (free)
- **Edition:** **80 numbered pieces** for LDF
- **Social:** IG/TikTok **@scentprint.studio** | **scentprint.studio**

What's new / Why it matters

Scent Print reimagines aromatherapy as motion, not furniture. Plant-based, biodegradable scent cores snap magnetically into sterling openwork pendants so fragrance travels with the wearer—no flame, no oil, low, steady diffusion. An optional online element quiz suggests a personal direction, mapping Metal · Wood · Water · Fire · Earth to mood and rhythm. Patterns reinterpret classical oriental motifs—Suozi (armour chain), Haitang (begonia), Lianqian (Ancient coin)—via parametric openwork that improves airflow and makes swapping tactile and playful.

About Scent Print

Scent Print is a design-led fragrance accessory and lifestyle label translating Daoist Five-Element herbology into contemporary, wearable formats. Pairing sterling-silver openwork with plant-based, biodegradable cores, the studio proposes a portable, repeatable micro-ritual. Scent Print debuts Wu Xing Flora at London Design Festival, introducing wearable, swappable solid-scent cores housed in octagonal pendants, alongside a daily drop-in incense workshop. Entry is free, with a limited, numbered LDF edition of 80.

Quote (Founder / Creative Director)

“We wanted scent that moves as people move—quiet, refillable, and rooted in culture, not clutter for a shelf,” says Yuqing, Co-founder of Scent Print. “Touch, swap, breathe—let fragrance become part of daily life.”

Exhibition & workshop details

The installation shows Wu Xing Flora collection, prototypes, making tools and development sketches—from heritage pattern studies to the magnetic modular structure. The Intro Workshop (≈15–20 minutes, drop-in) lets visitors hand-press a small scent bead or tablet—measure & blend → knead → press/demould → air-dry—and take home a tiny sample. To join the complimentary intro session, guests are invited to share Scent Print's LDF post on IG or TikTok and show staff on site. A longer Premium Workshop is available; details and sign-up in-store during LDF. Peak times may involve short waits; step-free entry and seating provided.

Limited LDF edition

Scent Print is releasing 80 numbered pieces exclusively during LDF (No. __/80 · LDF 2025). Once

sold out, visitors can pre-order via the website. Hand-crafted work takes time; thank you for your patience.

Sustainability

Cores are plant-based and fully biodegradable; silver shells are modular and reusable (future modules: bracelets, waist chains). Packaging uses moulded pulp and minimal inks; over 80% of making is by hand.

Images

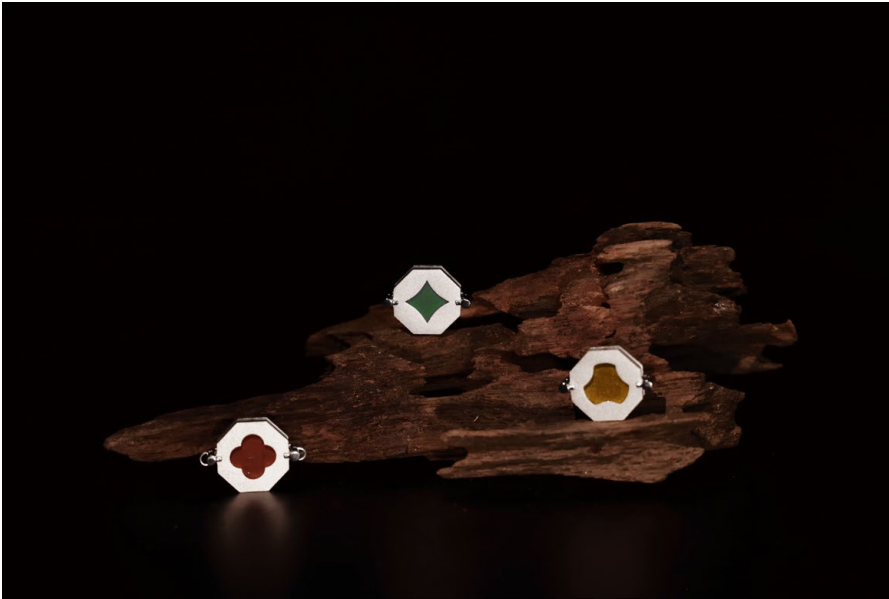


Figure1: Wu Xing Flora three octagonal pendant styles (Suozi/Armour chain, Haitang /Begonia blossom, Lianqian/Ancient coin)



Figure2: The craftsmanship process of handmade scent core, ScentPrint Studio