

## **JiawenLi LDF Press Release**

### **AI Sketching Tool Seeks Participants at London Design Festival**

*Research project explores collaborative approach to human-AI creativity*

**LONDON, September 2025** – An experimental AI-assisted sketching tool will be demonstrated at the London Design Festival this month, as part of an ongoing research project seeking participants. Developed by Jiawen Li from the Glasgow School of Art, the web-based platform takes a different approach to AI creative tools by focusing on the creative process rather than finished results.

The tool offers two interaction modes designed to support creative thinking. The Divergent Thinking Mode generates unexpected visual elements that contrast with user input—for example, responding to a sketch of a car with a jellyfish, encouraging new creative directions. The Convergent Thinking Mode provides complementary elements that build on existing ideas, such as adding a road when a user draws a car.

"Most AI creativity research prioritises efficiency over the creative process," says Li. "I wanted to explore whether current AI tools might actually limit creative exploration rather than support it."

The tool is a part of the result of a three-year research project examining human-AI creative collaboration. Unlike commercial AI art tools that chase efficiency, this project aims to support visual ideation in the creative process.

During the London Design Festival, Li will offer 30-minute individual sessions where participants can try the tool and discuss the research. These sessions are designed primarily for visual creative professionals but are open to anyone interested in creative collaboration.

The tool creates an iterative process where each drawing, prompt, and AI response influences the next creative decision. All AI-generated images can be repositioned and integrated with user drawings, creating a genuine dialogue between human ideas and computational responses.

This research project is part of ongoing work at the Glasgow School of Art investigating how AI can support creative processes whilst maintaining human agency in the creative workflow.

#### **For more information and booking:**

Web: <https://the-ai-assisted-sketching-tool-web-steel.vercel.app/>

Booking: <https://www.eventbrite.com/cc/discover-the-ai-assisted-sketching-tool->

[4498413](#)

Email: [j.li19@student.gsa.ac.uk](mailto:j.li19@student.gsa.ac.uk)

**About the project:** This tool is developed as part of research at the Glasgow School of Art focused on understanding AI's role in supporting human creativity.

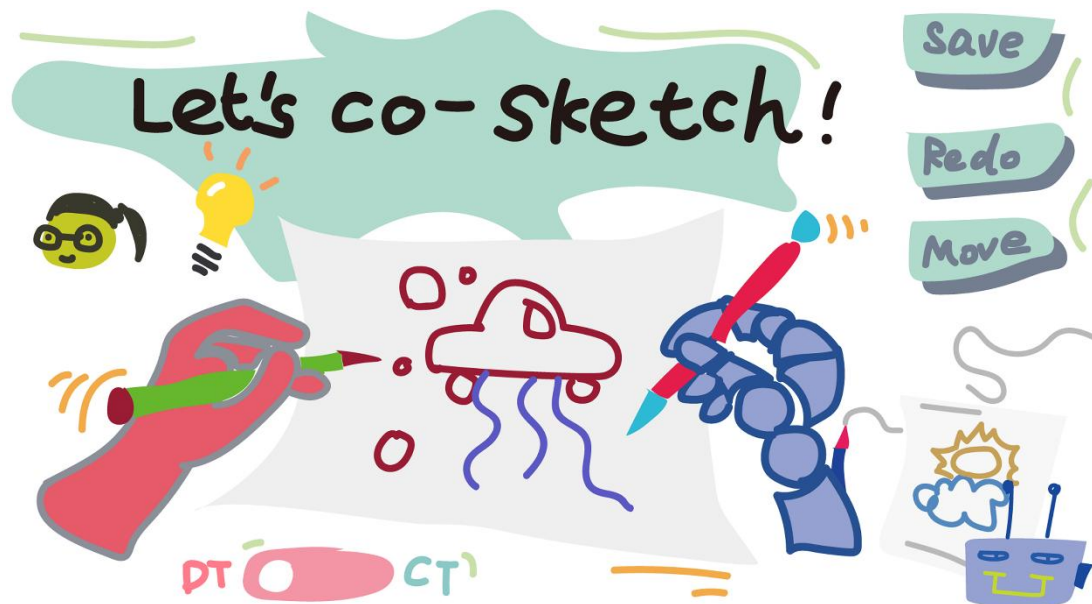


Image Credit: Jiawen Li