

Bohinc Studio

London Design Festival 2021: Bohinc Studio presents Afternoon Tea, a new collection of furniture in a residential setting

- Afternoon Tea is Bohinc Studio's largest and most curvaceous collection to date, designed by Lara Bohinc
- Presented in the residential setting of a London townhouse at the 19th edition of London Design Festival
- Nine new pieces, comprising of a dining chairs, armchairs, sofa, coffee and occasional tables, are displayed alongside chandeliers and sconces from the 2021 lighting collaboration with Roll and Hill, and the studio's carpets and wall hangings for Kasthall

From 20th to 24th September 2021, Bohinc Studio shows its new collection of furniture in the residential setting of a London townhouse. Each floor presents a different living situation: the ground floor is the dining area and study, the first floor is the living room and home library and the second floor is the bedroom with ensuite bathroom.

The new playful collection on show is Bohinc Studio's most feminine to date, with shapes that are round, embracing and loveable. Further developing Lara Bohinc's geometric style, the new pieces feature spheres and circles, with only subtle use of straight lines and angles.

Bohinc Studio presents the new pieces in a home setting which mixes period features and contemporary aesthetics, building on the brand's signature style. Raw concrete and exposed brickwork contrast the period cornicing, decorated in a geometric fashion in dialogue with the original architectural lines. The mix of colour is pronounced - the walls are painted in dusky tones of light terracotta, muted pinks, cherry and brown tones, set against a backdrop of grey and black. The furniture contrasts the space with very light tones - soft upholstered seating pieces are presented in white, cream and slightly toned pink bouclé and furry fabrics. The tables are made in white or black stained wood or in lightly toned marbles. Additionally there are accents of bright colours with powder coated steel dining chairs in red or cherry colours.

'I wanted to design a space that is happy, warm and inviting, full of character and contrast. I love to use colour to create mood and texture to create a desire to touch, adds Lara Bohinc. "I aimed to create a sensual space. The pandemic forced us all to spend more time at home, and I realised I wanted my pieces to make you feel loved, cocooned and happy. I also wanted to create pieces that look like they are good enough to eat. The collection's name is an appreciation of the sweet comfort of an afternoon tea - happy, joyful and indulgent moments, a time when friends and family meet; an occasion very much missed in recent times.'

Materials play an important part in the collection, which contrasts soft textured upholstery seating pieces, with other tables and chairs presented in smooth marble, stained wood or metal. This collection has less metalwork than previous collections and has a soft and warm feel. All pieces are made by hand in the studio workshops in Europe and UK.

Bohinc Studio

GROUND FLOOR

The first space has a concrete floor that contrasts with the period woodwork and cornicing, which is decorated with grey and dusky rose colours. The first room is a study, in which visitors are greeted by the Kipferl marble desk and the Afternoon chair as well as the new Trevor dining chairs.

Afternoon Chair

Afternoon Chair has the majesty of a throne, with the huge circular backrest that reaches out and upwards, its legs curve to join the seat at angles. The chair is completely upholstered with soft, textural bouclé fabric.

Dimensions: 570 x h 805 mm x 1114mm.



The Kipferl marble desk

The Kipferl marble desk is made from rosa portugal marble and has sculptural batons, reminiscent of sponge fingers, which support its top, a semi-circular crescent suggesting a sugar coated variety of the noble Austrian pastry. Dimensions: 1700 x h 860 mm x 770mm.

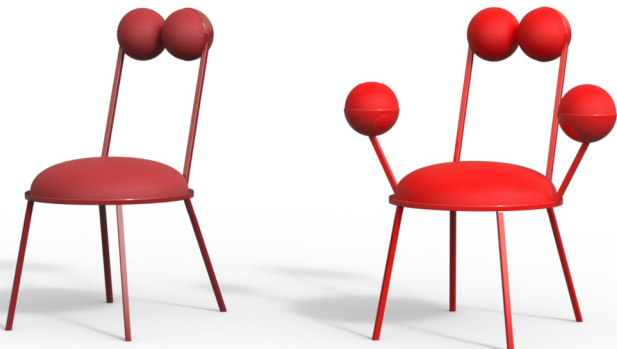


Trevor dining chair

Trevor dining chair makes a perfect accompaniment for the tea room, its round spheres forming backrest and armrests, floating on thin metal rods, just like bonbons speared on cocktail sticks. Almost frog-like in its appearance, the chairs take the form of a friendly creature with a big mouth and bug-eyes. The chairs are made of powder coated steel, with soft upholstered seat and backrest and are available with and without armrests.

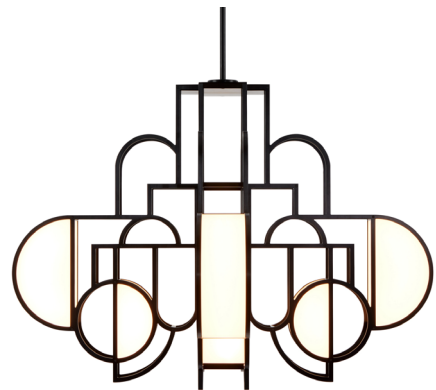
Dimensions without armrests: 454 x h 857 mm x 600mm

Dimensions with armrests: 754 x h 857 mm x 600mm



Moonrise chandelier

The room is completed with the Moonrise chandelier in black anodised aluminium, from the 2021 collaboration with Roll & Hill, which rests above the Lunar marble dining table. The Moonrise lighting collection was inspired by different phases of the Moon, with round and half round shapes composed in playful composition which are seen differently from every angle, just as we see changing Moon shapes within its cycle. The pieces are constructed using intricately machined aluminum that creates both the structure and the design.



Bohinc Studio

FIRST FLOOR

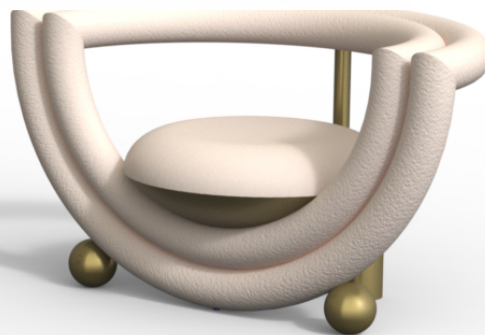
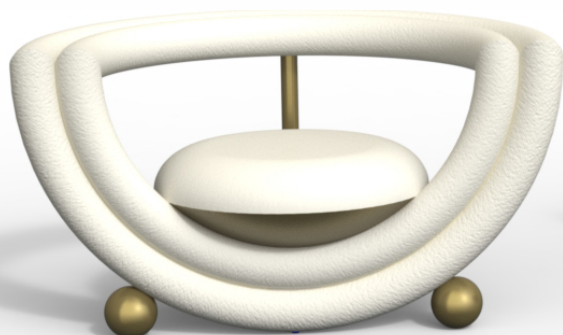
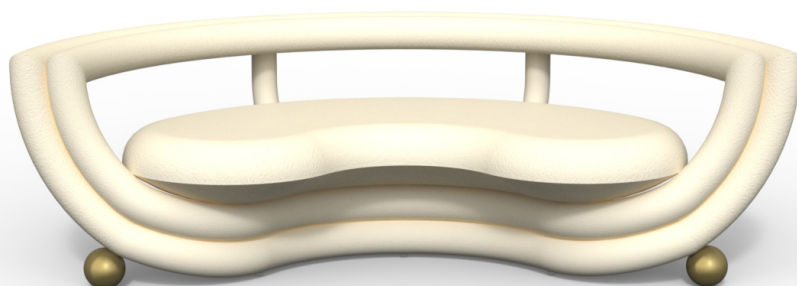
On the first floor, the living room and study are decorated in dusky cherry brown, terracotta and black tones, with white and beige chevron wooden floor. The black custom home library comprises of both shelving and several cupboards.

Kissing Sofa and Kissing Armchair

Kissing Sofa and Kissing Armchair feature two semi-circle layers; one bearing the cupped seat and a second forming the back-rest. All the lines are covered with soft upholstery apart from the metal legs and metal cups, which hold the upholstered seat like an ice cream coupe. It is reminiscent of an open mouth, ready to chat, eat and kiss.

Sofa Dimensions: 2069 x h 630 mm x 1050mm

Armchair Dimensions: 1200 x h 655 mm x 770mm



Patisserie marble coffee table

Patisserie marble coffee table is an ensemble of different patisserie inspired shapes - a canelé like side leg and two bonbon legs lift a cupped table top for a pleasingly asymmetric, almost haphazard assembly. The table is milled from arrabescato corchia, carrara, nero arquina and rosa Portugal marbles.

Dimensions: 800 x h 445 mm x 905mm

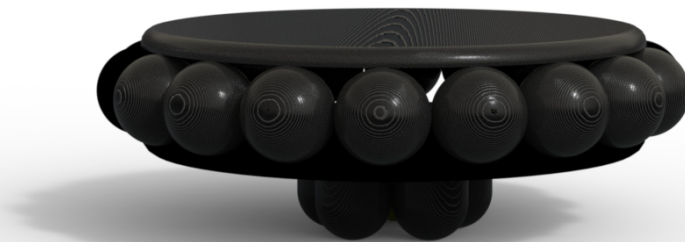


Bohinc Studio

Macaroon coffee table

Macaroon coffee table utilises fourteen spheres like berries, sandwiched between two round plates and made of 3D milled stained ash, available in either black or white.

Dimensions: 978 x h 412 mm x 978mm



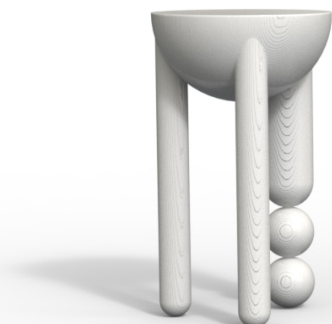
Profiterole small coffee table and Profiterole occasional table

Profiterole small coffee table and Profiterole occasional table are in marble and wood respectively, supported by round dessert-like spheres and semi-cupped legs which support a rounded top. The coffee table comes in nero marquina or white carrara marble. The wood side table is 3D milled and presented in both white or black stained ash.

Small Dimensions: 485 x h 410 mm x 485mm

Medium Dimensions: 300 x h 416 mm x 300mm

Large Dimensions: 350 x h 600 mm x 350mm

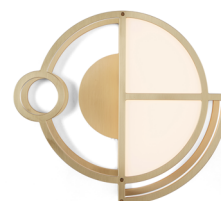
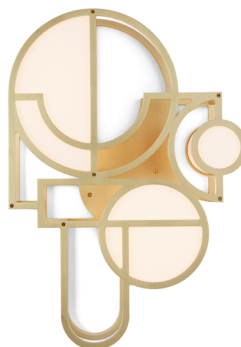
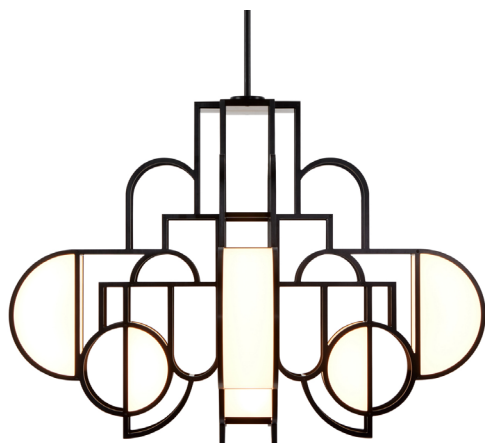


Moonrise chandelier and Moonrise sconces

The room also features Moonrise chandelier and Moonrise sconces in brushed brass from the Roll and Hill lighting collaboration. The large wool rugs and a wall hanging are from the existing collaboration with Kasthall.

Chandelier Dimensions: 632 x h 895 mm x 632mm, Sconce Large Dimensions: 345 x h 490 mm x 11mm

Sconce Small Dimensions: 307 x h 275 mm x 275mm



Bohinc Studio

SECOND FLOOR

Dusky pink terracotta tone is used throughout this floor, contrasted by custom black wood cabinetry. The arched cupboards feature integral sliding doors to separate bedroom and bathroom, and a matching custom black cabinet houses the double sinks, in front of Bohinc's geometric pattern marble wall, all the stone by Marmi Serafini. Planetaria sconce lights are both sides of the Planetaria Double Mirror, all in black powder coated steel. Bohinc continues the geometric marble pattern for the shower walls and floor. The impressive modern bath by Bette sits in the middle of the room, aligned with the windows at either end of the adjoining rooms. The Celeste console is presented in a new Crackle Black finish, and Profiterole side tables and Planetaria lights sit each side of the bed. The headboard is created with the rug West of The Sun, from the collection Bohinc designed for Kasthall.



About Lara Bohinc:

Lara Bohinc founded Bohinc Studio in 2016 for the exploration of furniture and object design.

Bohinc's ability to create work of exquisite beauty is rooted in her familiarity with materials and manufacturing approaches.

While retaining a deep respect for the traditional principles of her craft, she has also drawn on her knowledge of industrial techniques, fusing modernity of style with function, to achieve an elegance ahead of its time.

In April 2019, Bohinc Studio presented a new collection of furniture and objects for the home during Salone del Mobile 2019 for the third consecutive year as well as exhibiting at LDF 2019 and 2020.

BOHINC STUDIO

Opening hours

20-24th September 2019; 10:00 am - 6:30pm

By appointment only

To book an appointment, or further information, images requests and to interview Lara, please contact:
press@bohincstudio.com or contact@rixnerpr.com

www.bohincstudio.com
[@bohincstudio](https://www.instagram.com/bohincstudio)